

This diagram shows the relationship between factors related to type 2 diabetes and Alzheimer's disease. These connections are associations. We don't know the exact causes of Alzheimer's disease.

## EFFECT OF INSULIN

ON

*Alzheimer's*

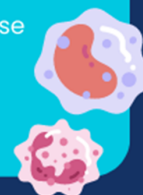
### Insulin Resistance

- Insulin is less effective
- Blood sugar is not managed



### Inflammation

- Immune system response
- Brain cell damage



### ALZHEIMER'S DISEASE



### Brain cell plaques

- Builds up in brain cells
- Excess insulin interferes with cleaning of waste, like plaques



### Blood flow

- Less blood flow to brain cells
- Less nutrients for the brain



## INSULIN RESISTANCE

*IN Alzheimer's*

In type 2 diabetes, insulin resistance causes an overproduction of insulin. This doubles the risk of developing Alzheimer's disease.

Insulin resistance and Alzheimer's disease are often found together, but we don't know the exact causes yet.

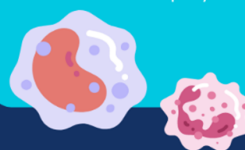


## INFLAMMATION IN

*Alzheimer's*

The positive effects of insulin on the brain are hindered by inflammation. This can contribute to the development of Alzheimer's disease.

Insulin resistance and inflammation in the brain are connected and play a role in damaging brain cells.



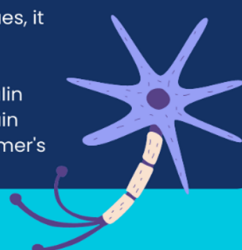
## BRAIN PLAQUES IN

*Alzheimer's*

Brain plaques are one of the main aspects of Alzheimer's. These plaques are cleaned up by the body using a special molecule called IDE.

IDE not only cleans up brain plaques, it also cleans up excess insulin.

In type 2 diabetes, the excess insulin prevents IDE from cleaning up brain plaques, which can lead to Alzheimer's



## BLOOD FLOW IN

*Alzheimer's*

Proper blood flow to the brain is essential for the health of brain cells.

Insulin resistance and inflammation from the immune system can disturb proper blood flow.

Too little blood flow to the brain can cause loss of brain functions and can lead to Alzheimer's disease.



This project has received funding from the European Union's Horizon 2020 research and innovation programme under grant agreement No 847879. This infographic reflects only the view of the authors and the European Commission is not responsible for any use that may be made of the information it contains.

